

High-performance, user-friendly, effective translation software

Are you suffering from any of the following symptoms?

- Your language services group is overloaded and struggling to meet increasingly tight deadlines.
- You sometimes get the feeling that you have translated the same sentences or documents before.
- Language professionals are spending too much time searching your document archives for previous translations of terms and sentences.
- Your new employees take too long to get up to speed.
- Your sub-contracting costs are too high.
- Terminology is not consistent across translations.
- Your language services group may be cut unless you reduce costs, even though demand for language services continues to increase.

LogiTermWeb can help!

LogiTermWeb, the most comprehensive computer-assisted translation (CAT) solution available, can relieve all those symptoms!

- LogiTermWeb helps you complete translations more quickly so you can meet deadlines.
- LogiTermWeb saves time on searches and on sentence and terminology retrieval.
- LogiTermWeb gets new employees up to speed faster.
- Powerful analysis functions in LogiTermWeb help lower sub-contracting costs.
- LogiTermWeb helps standardize terminology and phraseology to reduce revision costs and time.
- LogiTermWeb makes your language services group more productive and cost-effective.

Benefits

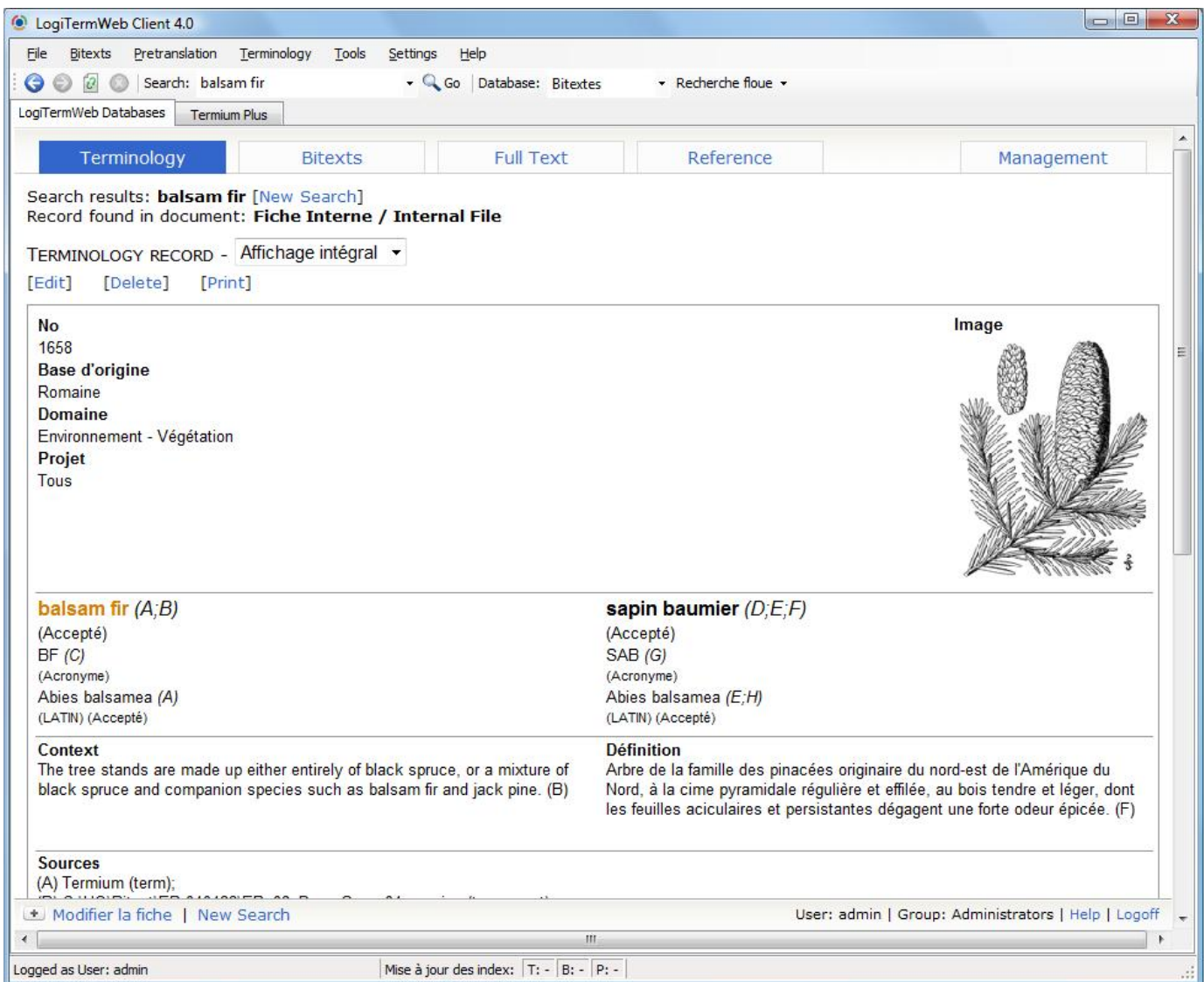
- The best alignment engine available.
- User-friendly interface.
- No day-to-day management required.
- No preparation required for document analysis.
- Links to Termium, TransSearch, Le grand dictionnaire terminologique and other resources.
- Translate in Word, WordPerfect, PowerPoint or Excel.
- All file types supported, including PDF.
- Faster terminology research.
- The best value on the market.
- Centralized terminology record creation.

How LogiTermWeb works

LogiTermWeb features a user-friendly Web interface that provides access to four databases: Terminology, Bitexts, Full Text and Reference. Terminology records for the Terminology database can be created, modified and viewed in the Web interface or Microsoft Word. The Bitexts database displays previous translations aligned with the source texts, side by side. Searching the Full Text database is like searching the Internet, i.e., LogiTermWeb searches all

Translators spend close to one third of their time on research. With the sophisticated search capabilities of the LogiTermWeb Bitexts database, that time is dramatically reduced.

unilingual archives regardless of language. The Reference database is used to store client instructions, internal procedures, employee contact information and other useful information. LogiTermWeb also features a comprehensive set of translation utilities, such as term extraction, repeated sentence analysis, glossary creation, domain analysis, sentence and terminology pretranslation, document alignment, deformatting, and translation memory file import and export.



Terminology search result in LogiTermWeb

Features

Linguistic functions

Pretranslation

Machine pretranslation of new documents using terminology data and bitexts to increase consistency in terminology and phraseology, and reduce costs and turnaround times.

Term extraction

Automatic extraction of candidate terms from one or more texts, to use in creating terminology records.

Repeated sentence analysis

Automatic extraction and highlighting of repeated sentences in one or more documents. Useful for ensuring consistency in large translation projects involving multiple translators.

Document comparison

Comparison of one or more source documents with your unilingual and bilingual archives.

Domain analysis

Summary of domains dealt with in a document, to help with assigning texts to translators.

Bitext creation

Automatic alignment of manually specified document pairs (up to 25 at a time). As well, a new function to align manually selected text passages.

For a completely automated alignment process, see the AlignFactory fact sheet.

Alignment editor

Easy-to-use tool for making alignment corrections.

Deformatting

Conversion from various file types (including PDF) to plain text. Optional merging of an unlimited number of files for term extraction or repeated sentence analysis.

Data conversion

Import and export of TMX, Trados and TM/2 translation memory files.

Import and export of terminology records in various formats.

Terminology record creation

A number of methods to create bilingual or multilingual terminology records, using Microsoft Word, the LogiTermWeb interface, a bitext or term extraction output.

Glossary creation

Extraction of terminology records related to a given domain or set of domains.

Management

Customized setup of database and function privileges for users and user groups.

Supported file types

All functions*: more than 100 file types, including PDF, Word, Excel, PowerPoint, HTML and WordPerfect.

* Except for Pretranslation, which produces output in Word, PowerPoint, Excel or WordPerfect format.

Supported languages

Any language covered by the Latin-1, Unicode or UTF-8 encoding.

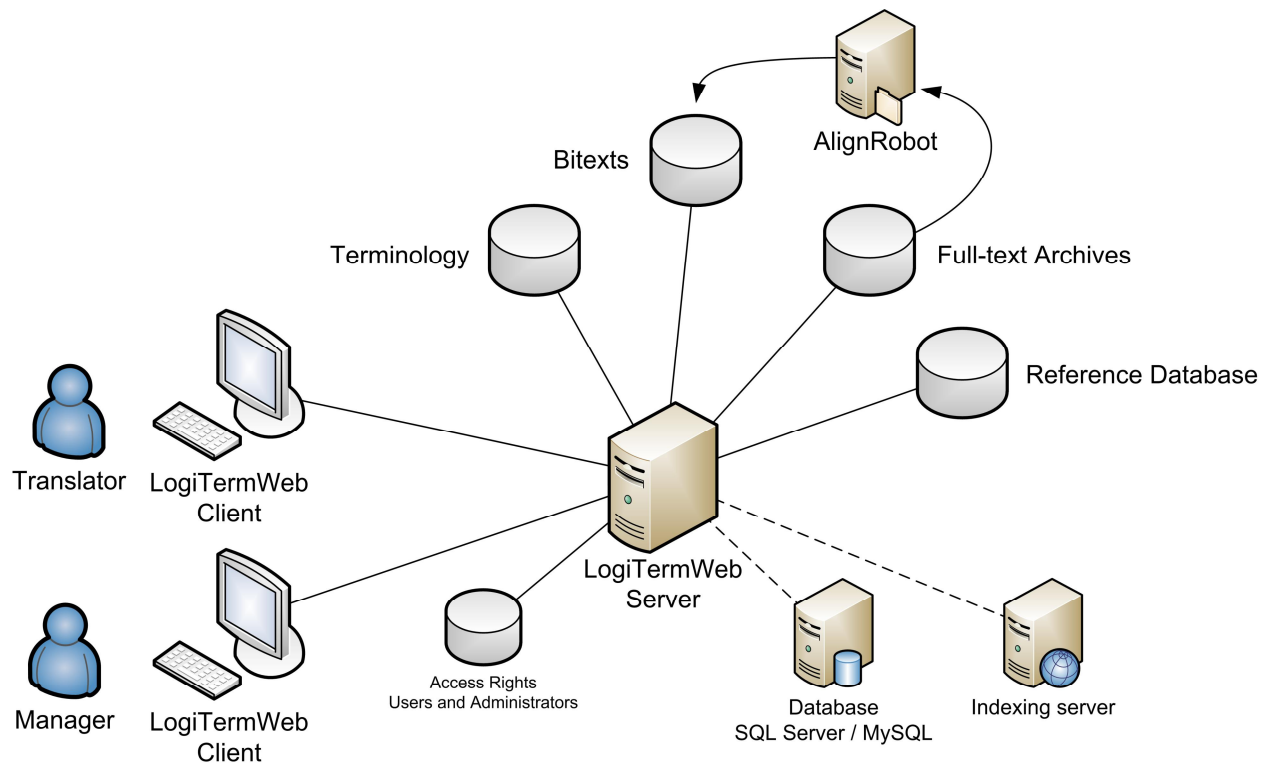
Minimum system requirements

Server

- Microsoft Windows 2000/XP/2003/Vista/2008
- Apache 2.0 or IIS Web Server version 5.0
- 2-GHz processor
- MySQL 5.0 or Microsoft SQL Server 2000/2005
- Available disk space twice the size of the translation archives, if the archives are stored on the LogiTermWeb server, or available disk space equal to the size of the translation archives, if the archives are stored on a separate server.
- 200 MB of available disk space for software files
- 1 GB of RAM

Client

- Internet Explorer or Mozilla Firefox
- Microsoft Windows 2000/XP/2003/Vista/2008
- Microsoft Office 97/2000/XP/2003/Vista/2008
- 1-GHz processor
- 512 MB of RAM
- 200 MB of available disk space on each computer



LogiTermWeb architecture